

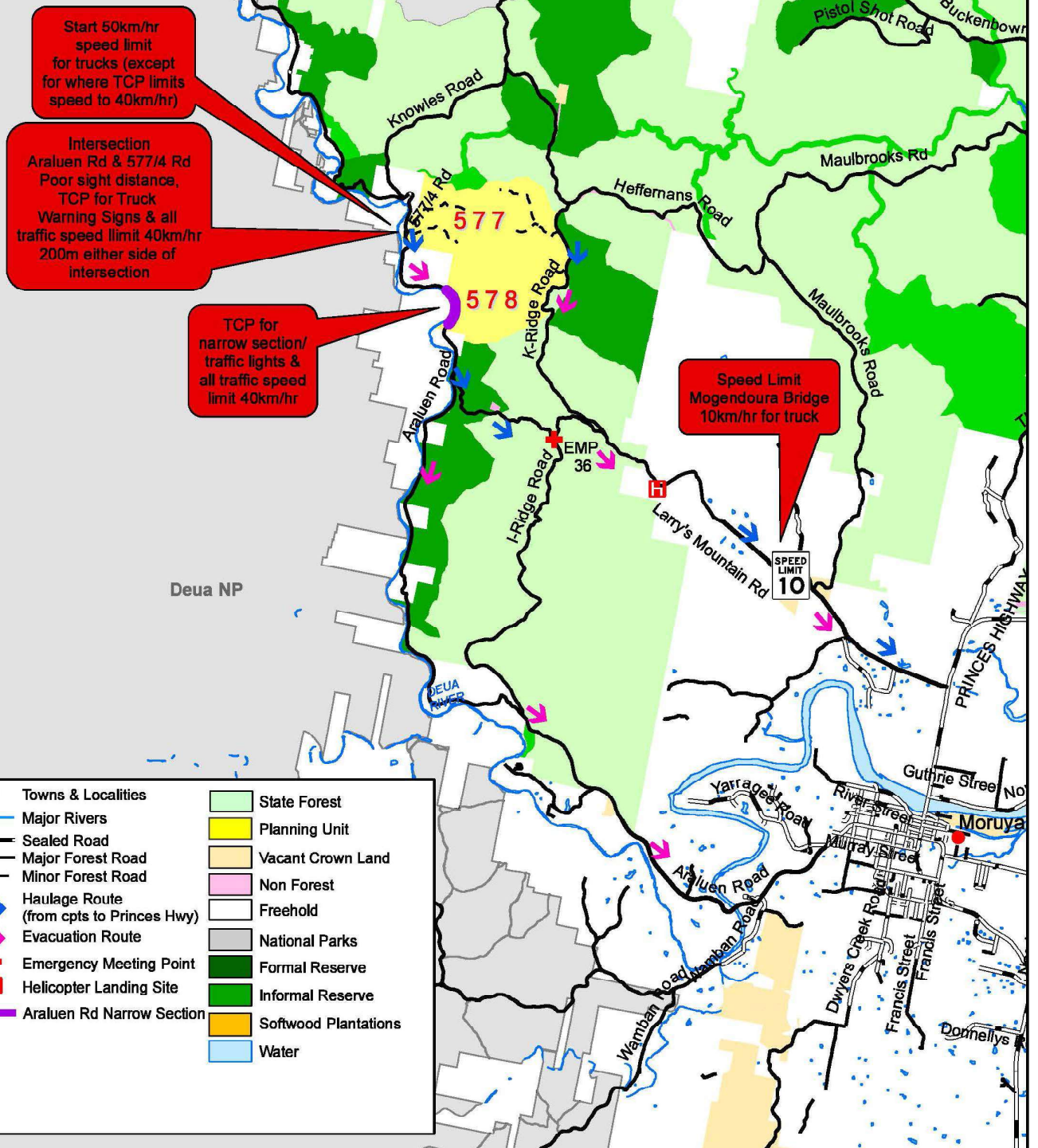
# LOCALITY MAP

## Compartments 577 & 578

### Wandera State Forest No.143

BATEMANS BAY MANAGEMENT AREA

Scale: 1:100,000



Scale: 1:15,000  
Contour Interval 10m  
Version: 1 Prepared By: Kate Halton  
PLANNING SUPERVISOR APPROVAL  
APPROVED: Lee Blessington  
DATE: 09/02/2016

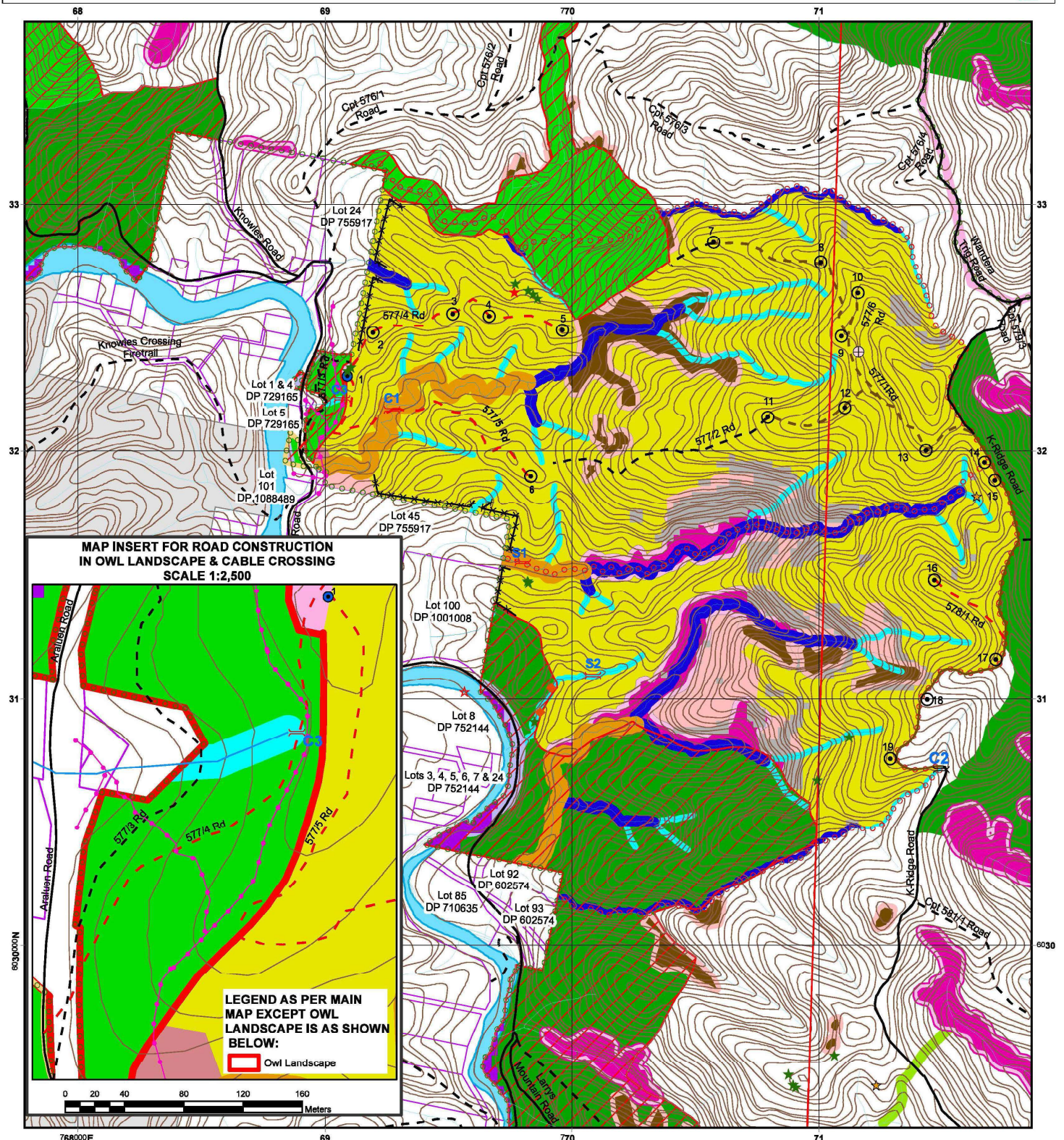
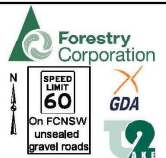
# Harvest Plan Operational Map

Compartment: 577 & 578

State Forest: WANDERA No: 143

Southern IFOA - South Coast

Map Sheet: BURRUMBELA 8826-2N & MOGO 8926-3N



**LEGEND**  
**BOUNDARIES**

- State Forest
- Compartment
- Proposed Control Lines
- Zone Split 55/56
- Occupation Permit

**HARVEST AREA**

- FMZ 4-RU 1-ST5 Med/Heavy

**ROADS**

- EPL Standard (New Construction)
- EPL Standard Existing (Major)
- EPL Standard Existing (Minor)
- Major Forest
- Minor Forest

**NON HARVEST AREA**

- Excluded Forest
- Owl Landscape (LIDAR corrected)
- EEC (River Flat Euc Forest)
- Rocky Outcrop & Exclusion (20m)
- Slope > 30 (IHL 4)
- Rainforest & Exclusion (20m)
- Owl Landscape Exclusion Sch6 Ameliorative Exclusion
- Special Management (FMZ 2)
- Harvesting Protection (FMZ 3A) (LIDAR corrected)
- Non Forest Use (FMZ 7)
- Ridge & Headwater

**FLORA FEATURES**

- Leionema raietonii

**DUMPS & CROSSINGS**

- Temporary Dry Weather
- Permanent Bee Set Down
- New Crossing
- Existing Crossing

**DRAINAGE**

- Waterbodies/Deua River
- LIC Drainage
- Mapped LIC Drainage (LIDAR Corrected)

**FAUNA FEATURES**

- Glossy Black-Cockatoo
- Spotted-tailed Quoll
- Glossy Black-Cockatoo (Feed Tree)
- Gang-gang Cockatoo
- Grey-headed Flying-fox

**TENURE**

- Private Property
- National Park

**INFRASTRUCTURE**

- Underground Cables

**STREAM EXCLUSION ZONES (LIDAR CORRECTED & MEAN STREAM WIDTH FACTORED INTO EXCLUSION) (EPL IHL 1/2 & TSL)**

Feature	Filter Strip	Protection Zone	Operational Zone
Unmapped	5m	5m	10m
1st Order	5m	6m	10m
2nd order	5m	15m	10m
3rd order	5m	25m	10m
4th order	5m	45m	10m